

Also included with your Ozone Probe 2-Stage Rocket kit:

**Filling Hose / Launcher**

Lets you pump up the rocket from a safe distance away. Releases automatically when you stop pumping.



**Guide Rod**

Keeps your rocket pointed up until it's going fast enough to continue on straight up.



**Safety Marker**

Ensures that the launch site is clearly visible to all.



**Clear pictorial instructions**

Makes the rocket easy to assemble, a breeze to launch.



**Requirements:**

- 1 - Bicycle air pump
- 1 - 2-liter plastic pop bottle
- 200 ml water
- 1 - 1000' wide open field

# Ozone Probe 2-Stage

Water Rocket Kit To 500 feet

Closed-cell foam bumper pad for a safe, soft touch-down every time.

Designed to fit on any plastic pop bottle you choose.

Upper-stage nozzle specially designed for controlled, long-term energy release.

Super-light expanded polymer strut supports instantly fold out and click into place.

Fluted tubular polypropylene struts lock ring fin in position for aerodynamically superior performance.

Low-friction guide tube keeps the rocket pointed up during liftoff.

Shock-absorbing mounting system for maximum reusability.

Tough expanded-polymer booster fins stabilize entire rocket during liftoff.

Upper Stage weighs only 60 grams, maximizing both altitude and safety.

One-piece expanding bulb interstage release mechanism for high reliability, split-second timing.

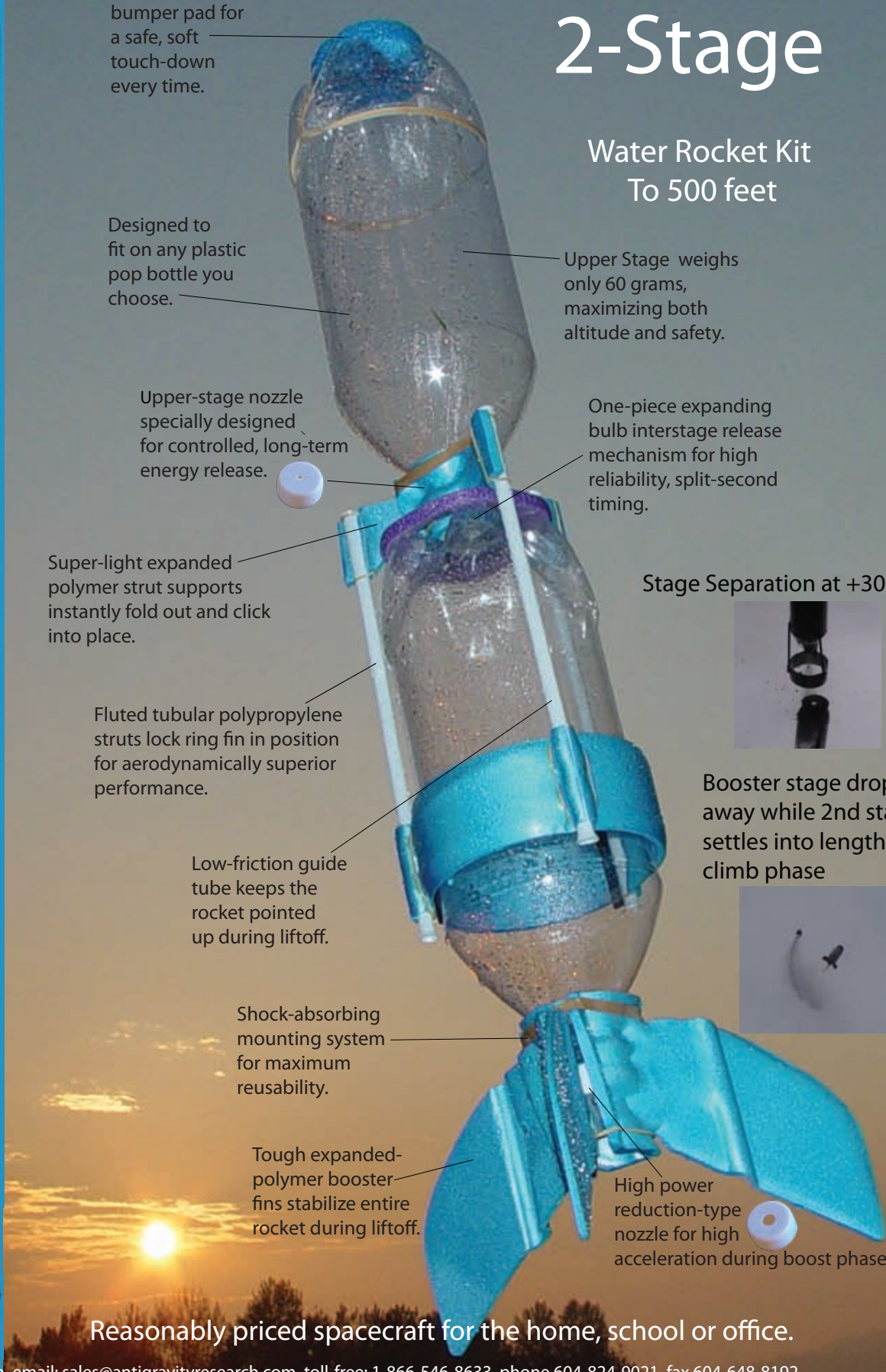
Stage Separation at +30 ft



Booster stage drops away while 2nd stage settles into lengthy climb phase



High power reduction-type nozzle for high acceleration during boost phase.



Reasonably priced spacecraft for the home, school or office.

